

What Makes BigToys Play Equipment Green?

Why use new materials when high quality recycled materials are available?

Why use wood from unknown sources when wood that is certified as sustainable is available?

Why use materials containing toxic substances when non-toxic alternatives are available?

These are some of the important questions we ask ourselves when making decisions about the materials that go into BigToys. The fact that we build products for children makes these decisions all the more critical.

Recycled Materials

BigToys sturdy and durable steel and plastic structural system contains U.S. made, recycled materials. This gives BigToys one of the highest percentages of recycled content available in play equipment today. Our use of post-consumer, high density polyethylene plastic in our roofs, decks and enclosures helps keep hundreds of thousands of milk jugs out of landfills each year.



BigToys MBT-1118 Unity

As an example, one BigToys MBT-1118 structure keeps 12,328 milk jugs from ending up in a landfill. That's equal to a year's worth of milk for 216 families. In addition, nearly 800 pounds of scrap metal – crushed cars and appliances – are also diverted from going to a landfill.



Sustainable Wood

Trees are a sustainable resource that BigToys has helped manage for over three decades. Starting in 2006, all wood products used in our playgrounds are sourced from forest product producers that are certified by the Forest Stewardship Council (FSC). This certification allows us to trace every wood component on a BigToy to the forest from which it originated and to have the assurance that the forest was managed in a sustainable, environmentally responsible manner.

The FSC is a stakeholder owned system for promoting responsible management of the world's forests. It governing principles include:

- Conservation of ecological functions and the integrity of the forest.
- Promotion of the economic viability and sustainability of natural forests.
- Recognition and respect of indigenous people's rights as well as the social and economic well being of forest workers and local communities.



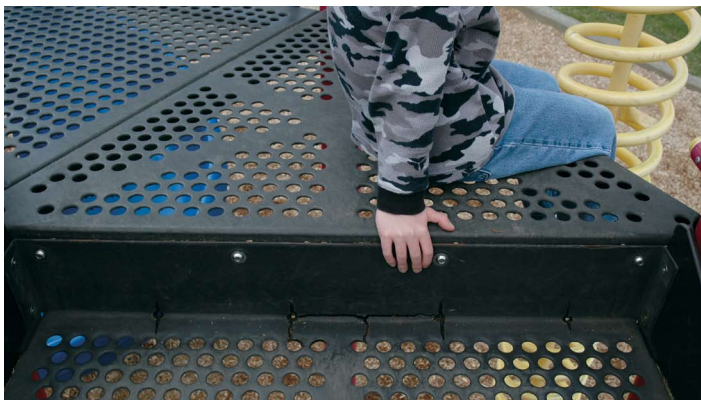
BigToys EC-735 Hamlet

What You Need To Know About PVC on Playgrounds

Polyvinyl Chloride

Polyvinyl Chloride, commonly known as "PVC", is used to coat various components on the majority of commercial playground equipment sold in North America.

PVC is widely recognized to pose risks throughout its life cycle - in its production, its use and its disposal*. Common PVC additives known as phthalates have the potential to cause organ and reproductive damage to children if they are ingested. These concerns led Governor Arnold Schwarzenegger and the California State Assembly to ban the use of these chemicals in toys for children under age three, in October, 2007**.



BigToys recognizes that the discussion regarding the suitability of polyvinyl chloride (PVC) in the manufacture of consumer goods is incomplete. However, in light of growing concerns we feel it is appropriate to err on the side of safety and discontinue the use of any material that is thought to pose a risk to children's health when alternatives are available.

For this reason, BigToys eliminated all Polyvinyl Chloride (PVC) from our products in September, 2004.

*Healthy Building Network

**California Assembly Bill 1108

When it comes to public playgrounds, perhaps the most serious concern is found when PVC is burned. It is an unfortunate fact that vandals will burn playground equipment that often contains PVC.



This playground, which contained PVC coated parts, was intentionally burned by vandals.

Independent testing has proven that burning the PVC coating commonly used on playground platforms results in PCB's and dioxin being created. Regardless of the amount, maintenance workers and children face health risks if they come in contact with these two carcinogenic substances.

As with recycled and sustainable materials, alternatives exist that can be used to manufacture play equipment components as opposed to PVC coated steel. We encourage you to consider all these choices carefully when purchasing playground equipment in the future.

BigToys[®]
Green Playground Solutions™

www.bigtoys.com
toll free 866-814-8697

© Copyright BigToys, Inc. 2007